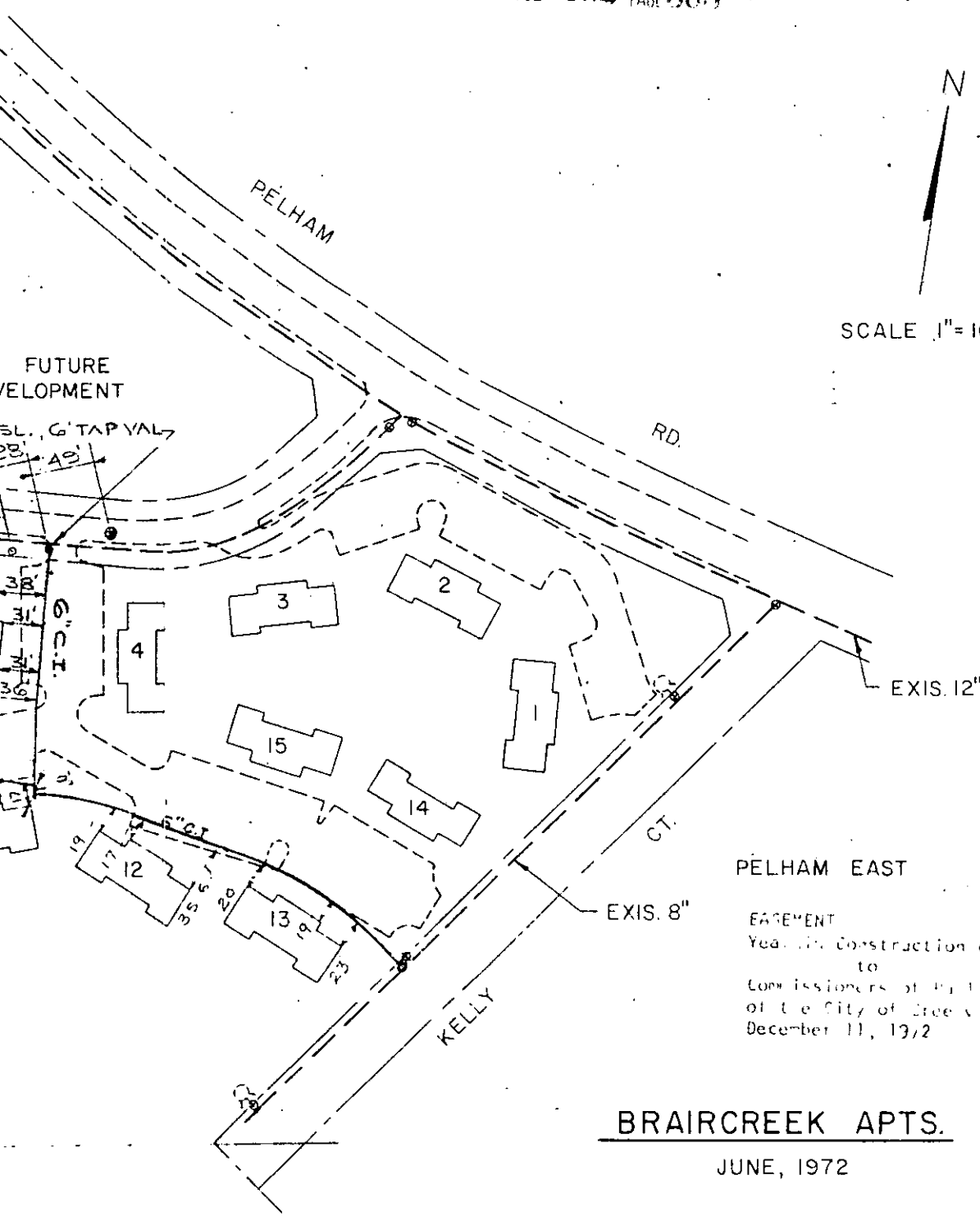


N

SCALE 1"=100'



PELHAM EAST

EASEMENT  
 Yearlin Construction Company,  
 to  
 Commissioners of Public Works  
 of the City of Freeville,  
 December 11, 1972

BRAIRCREEK APTS.

JUNE, 1972

Plat and Deed Recorded December 13, 1972 at 2:18 P.M., # 17264